

# EDUCATION MATTERS



Quarterly Education Update from

CHICHESTER MEDICAL EDUCATION CENTRE - ST RICHARDS HOSPITAL  
WESTERN SUSSEX HOSPITALS NHS TRUST

**WINTER TERM**

FEBRUARY 2011

Issue 7

---

Welcome to the latest issue of Education Matters, a quarterly newsletter to keep you up to date with the ever changing world of Postgraduate Education at St Richards.

To be issued for Spring, Summer, Autumn and Winter terms  
Comments and suggestions would be most welcome.

---

## WHO'S WHO IN THE POSTGRAD. CENTRE AT ST RICHARDS:

More info at: [www.cmec.info](http://www.cmec.info)

Telephone: 01243 788122 (ext)

David Beattie:	Director of Medical Education (Chichester and Worthing)	Ext. 2714
Chris Smith:	Clinical Tutor - Chichester	
Bebba Smithers	Postgraduate Education Manager	Ext. 2726
Becki Robinson	CMEC Administrator/GP Education Manager	Ext. 2730
Chris Colman	Dental Education Manager	Ext. 2799
Denise Miles	Foundation Faculty Manager	Ext. 2743
Jay Miles	IT and AV Technician	Ext. 2731
Nissrine Tollaz	Medical Student Manager	Ext. 2795
Lisa Neville	Academic Registrar	Ext. 1579
Julie Turner	Clinical Skills Lead	Ext. 2742
Bev Norton-Smith	CMEC Reception/Room Bookings and CMT Admin.	Ext. 2731
Graeme Dewhurst	Associate Dean and Undergraduate Tutor	
Angela Skull	F1 Lead (Foundation Faculty Lead)	
Clive Pratt	F2 Lead (Foundation Faculty Lead)	
Fiona Barrett	College Tutor Emergency Medicine (EM Faculty)	
Jim Price	GP Tutor	
K Chadwick	GP Course Organiser (GP Faculty Lead)	
David Pullan	GP Course Organiser	
Jo Galbrith	GP Course Organiser	

[www.cmec.info](http://www.cmec.info)

Justin Dickens	College Tutor, Anaesthetics (ACCS Faculty Lead)
Lilias Lamont	College Tutor, Paediatrics (Paeds Faculty Lead)
Melanie Tipples	College Tutor, O&G (O&G Faculty Lead)
Sanjeev Menon	College Tutor, Medicine (Medical Faculty Lead)
Namita Kendall	College Tutor, Surgery (Surgical Faculty Lead)
Amanda Wellesly	SAS Tutor
Neal Gent	Simulation Lead – Trust and Deanery

## NEWS FROM THE POSTGRADUATE CENTRE

### RECENT DEVELOPMENTS WITHIN CMEC

New stage, drop down flat screen ceiling mounted monitors and new chairs in the Mickerson Hall.

Larger dedicated teaching room for Undergraduate Medical Students – 1<sup>st</sup> floor, CMEC

### WEBSITE – WWW.CMEC.INFO

Visit our website which is updated regularly to ensure information is current and useful. [www.cmec.info](http://www.cmec.info). The CMEC website has been recently re-developed to make it more user-friendly. Photographs of staff and education leads are being updated.  
Website Manager – Jay Miles on ext. 2731/2260 or Dect Phone 5867

## CLINICAL SKILLS/SIMULATION NEWS

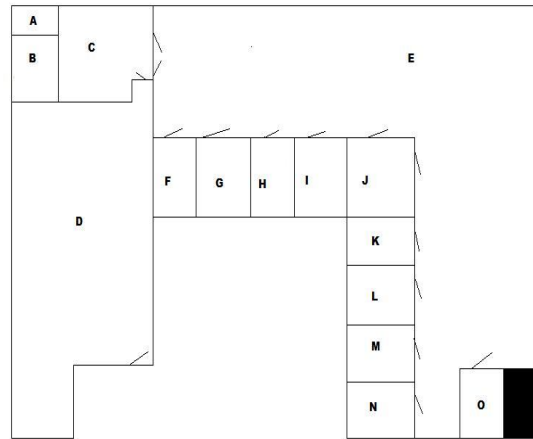
- Neal Gent appointed as Trust Simulation Lead
- Jay Simson will be running our fifth Transanal Endoscopic Microsurgery Masterclass on 5th and 6<sup>th</sup> April – FULLY BOOKED
- Melanie Tipples will be running our first MOET (managing the Obstetric Emergencies and Trauma course at the end of January

### The Aims of the MOET course

- To provide the knowledge necessary to save the mother and fetus in life threatening circumstances
- To teach the practical procedures necessary to save the mother and fetus in life threatening circumstances
- To test the acquisition of this knowledge and skills

## SIMPSON CLINICAL SKILLS ROOM AND ROGER MILES SUITE

### Floor Plan:



- A- Simulation leads office
- B- Clinical Skills and Simulation Leads Office
- C- Simulation Suite
- D- Simpson Clinical Skills Room - teaching room
- E- Roger Miles Clinical Skills Suite - Teaching Area
- F- Clinical Skills Training pod - Laparoscopic
- G- Clinical Skills Training pod - Minor Surgery
- H- Clinical Skills Training pod - Airway management
- I- Clinical Skills Training pod - Cannulation & Venepuncture
- J - Clinical Skills Training Pod - Plastering technique
- K- Clinical Skills Training pod - Urology and bowel
- L- Clinical Skills Training pod - Paediatric pod
- M- Clinical Skills Training room - Regional anaesthetic
- N- Clinical Skills Training pod - Eye and Ear training
- O- Clinical Skills Training pod - Obs and Gynae

## **Equipment**

**Simpson Clinical Skills Room with** fully computerised av lecture facilities

### **Anatomical training models**

- Life size sectional upper torso
- Median section of male pelvis
- Block model of skin
- Eyeball
- Upper and lower jaw
- Nerves and blood vessels face and neck
- Four view venipuncture training aid
- The human brain
- Neuro-anatomical brain, 8 part
- Functional shoulder joint
- Functional hip joint
- Functional model of the hands and fingers
- Functional elbow joint
- Functional knee joint
- Functional model of the foot and ankle
- Heart and lung table model
- Right kidney
- Kidney nephron and glomerulus
- Ear with pinna
- Head and neck

## **Simulation Suite**

- SimMan
- SimBaby
- Crash Trolley including Defibrillator
- Clinical / medical related disposables – Syringes, needles, etc
- Patient bed and trolley
- Anaesthetic Machine

## **Roger Miles Clinical Skills Suite**

- Simulated Ward area with Patient beds and trolleys
- Mega code kid
- Nursing Anne
- Nursing Baby
- Naso-gastric tube insertion trainer
- Anatomical training models
- Lecture facilities

### **Laparoscopic Pod**

- Wolf stack system
- Wolf laparoscopic abdomen trainer
- Laparoscopic instruments

### **Minor Surgery Pod**

- 2 Suture trainers – Arms
- Suture pads
- Suturing equipment – forceps, needle holders, scissors
- Range of sutures

### **Airway management Pod**

- 2 Airway trainers
- 1 bronchoscope trainer
- 1 Cricoid pressure trainer
- Airway management equipment – including difficult airway equipment

### **Cannulation & Venepuncture Pod**

- 4 Cannulation arms
- 4 advanced venapuncture trainers
- 8 basic venapuncture trainers

### **Clinical Preparation room**

- Set up to replicate a clinical wards procedural preparation area.

### **Urology Pod**

- 2 catheterisation trainers both male and female
- Catheterisation equipment – catheters, catheter packs
- 1 prostate trainer
- 1 bowel trainer

### **Paediatric Pod**

- Baby Hippy
- Intra osseous leg
- BLS baby manikin
- BLS junior manikin

### **Regional anaesthetic Pod**

- Spinal anaesthesia trainer
- Local anaesthesia trainer

### **Eye and Ear Pod**

- Diagnostic eye trainer
- Diagnostic ear trainer
-

### Obs and Gynae Pod

- Prompt birthing trainer
- Gynae procedure trainer

### Ultrasound Pod

- Ultrasound machine
- Ultrasound probes

## **GP EDUCATION**

Weekly GP lunchtime lecture at CMEC every Thursday at 1pm in Mickerson Hall. See website for programme: [www.cmec.info](http://www.cmec.info)

GP 3 Day Course – 21/22/23 March 2011. Topics covering Respiratory Medicine, Bariatric Medicine and Rehabilitation (adult and child). Full programme and booking form on website [www.cmec.info](http://www.cmec.info)

Encircle (son of Enspiral) half day protected educational event held monthly for all members of GP Practice team and linking to Commissioning priorities. Next CMEC-based workshop - Feb 15<sup>th</sup> - MSK Clinical Guidelines and Ophthalmology Update. Other CMEC-based workshops on 7<sup>th</sup> June and 19 October. Other half days practice-based and following up centrally-based sessions. Programme on website: [www.cmec.info](http://www.cmec.info) More information about Encircle in article below.

### **ENCIRCLE**

#### **EducationN for Commissioning, Innovation and Redesign: Coastal Learning Events.**

A protected learning scheme for all Primary Care staff will allow for the practice teams to be fully informed of the commissioning agenda, including updates in clinical guidelines, referral pathways and redesigned services. **ENCIRCLE** will be available to practices up to ten times a year at months which match the referral management project i.e. not including December or August. Four times a year **ENCIRCLE** will take place in a central location in CMEC (Chichester) and Charmandean (Worthing) to allow healthcare professionals to share good practice and learn about developments within the commissioning agenda and to learn about new treatments and methods of clinical practice. These sessions can also be used to support nurses with updates. The other six times a year **ENCIRCLE** will be practice based to allow for a cascading effect of key information to be passed on to all members of the practice team and implementation agreed at practice level. Practices will be required to report that the cascading has taken place and this report will be fed into the practice performance visits. The practice will be expected to use at least the first hour of the in-house **ENCIRCLE** Session dedicated to the commissioning agenda and the rest of the time can be used for other educational activities. The official launch of **ENCIRCLE** will be after April.

For a full programme of GP education around the whole patch – Chichester, Regis, Adur, Arun and Worthing (58) practices and other useful GP information please go to:  
[www.westsussexgp.com](http://www.westsussexgp.com)

## **GP TRAINER/TRAINEE WEBSITE**

**Programme Directors Page :**

<http://www.kssdeanery.org/general-practice/educators/programme-directors>

**Trainers Page :** <http://www.kssdeanery.org/gp/educators/gptrainer>

## **DENTAL EDUCATION**

Please see our website for a full programme of dental education we are able to offer dentists and dental practice staff. Our Dental Manager is Chris Coleman. [www.cmec.info](http://www.cmec.info)

## **INSPECTIONS**

4<sup>th</sup> February - Dr David Black, Dean Director, KSS Deanery visiting Trust to meet Educational Executive team (DME, Clinical Tutors and MEMs – both sites), Medical Director and CEO

23 March – Kings Bi-Annual inspection visit for Year 3 and Year 5 Medical Students

12 April – Deanery Centre Review Inspection

## **OTHER POSTGRAD. NEWS**

**E LEARNING FOR HEALTH** <http://www.e-lfh.org.uk>

e-Learning for Healthcare (e-LfH) is an award winning e-learning programme providing national, quality assured online training content for the healthcare profession.

## **SENIOR ASSOCIATE SPECIALIST TUTOR**

An additional grant has been sent from the KSS Deanery for additional SAS training opportunities and to support the SAS Tutor, Amanda Wellesley.

## **ONEXAMINATION REVISION AIDS -**

**Now available from West Sussex Knowledge & Libraries.**

Are you facing any of the following?

- **FRCA Primary**
- **MRCPCH Part 1 A**
- **MRCPCH Part 1 B**
- **MRCOG Part 1**
- **MRCOG Part 2**
- **MRCS**

We have personal licences for you, for the major medical & surgical examinations. These give:

- Revision aids
- Test questions
- Peer comparison
- Personal feedback and analysis

Each licence gives 2 months access to OnExamination.

Contact Margaret Calver in Worthing Health Sciences Library.

Email: [margaret.calver@wsht.nhs.uk](mailto:margaret.calver@wsht.nhs.uk)

Tel: 01903 285025 or internal extn 5025 (prefix 78 from SRH)

## **CMEC COURSES 2011**

### **BASIC SURGICAL SKILLS**

6/7/8 June

7/8/9 November

### **TRANSANAL ENDOSCOPIC MICROSURGERY MASTERCLASS**

5/6 April

### **ATLS**

2 - 4 March

11 - 13 May

5 - 7 October

### **ALS**

9/10 February

6/7 July

9/10 November

### **ILS**

14 February

14 and 28 March

( May

6 June

11 July

12 September

10 October

14 November

12 December

### **MOET**

26 - 28 January 2011

26/27 January 2011

### **GP 3 DAY COURSE**

21/22/23 March

26/27/28 September

### **LEADERSHIP DEVELOPMENT WORKSHOP (half day)**

30 March

## KENT SUSSEY AND SUSSEX DEANERY RECRUITMENT BULLETIN

- Applications for all core specialties are now open for candidates to apply
- Higher programmes at KSS are still being added to the prospectus website - [www.kssdeanery.org/prospectus](http://www.kssdeanery.org/prospectus)
- ACF Recruitment has now closed and interviews will be taking place shortly
- Centrally co-ordinated UK Offers System is no longer going ahead for 2011 Recruitment

### CHANGES TO UK OFFERS FOR 2011 RECRUITMENT

The Department of Health (DH) decided to postpone the centrally coordinated UK Offers System until 2012 recruitment pending further testing. The DH have released this information detailing how offers will be coordinated this year:

All Round 1 offers in GP and specialty training will be issued UK-wide to an agreed timetable, with all Round 1 first offers issued by 11 March 2011. Applicants will be able hold a Round 1 offer from any specialty while waiting for other offers.

The amendment to the plan concerns the method of issuing Round 1 offers. Colleges and deaneries have been working with the UK health departments to develop a single online system to deliver Round 1 offers to applicants in the forthcoming 2011 specialty recruitment. However, it has been decided more time should be allowed for system testing with full implementation deferred to 2012. Colleges and deaneries will therefore issue Round 1 offers individually in 2011. The decision to defer was taken by the Medical Education England, Medical Programme Board as it was considered the benefits of the single online system would be best achieved when all specialties and deaneries are in a position to proceed. Unfortunately, this decision has been taken after the earlier plan had been publicised to applicants and others.

The deferral should have minimal impact on applicants. In practice, applicants will still have coordinated offers as explained in the Quick Guide to Recruitment 2011.

What will happen as indicated in the published Quick Guide for applicants:

- Applicants will still receive notice of a Round 1 offer by email (or by text, if this option is available).
- Applicants will still be able to expect that all first offers in Round 1 GP and specialty recruitment will be issued UK wide by 11 March 2011.
- Applicants will be asked to accept, hold or reject each Round 1 offer within 48 hours (this includes weekends and bank holidays).
- Applicants will be able to hold one Round 1 offer (and only one) while waiting for other Round 1 offers.

What is different from the information presented in the published Quick Guide and also from that reported in a recent issue of BMJ Careers: We will not be proceeding this year with the UK Offers for Medical Specialty Training website in Round 1 of recruitment in 2011. This means that applicants will not receive an email asking them to log in and check their contact details; and they will not be checking their Round 1 offers or their interview ranking on the UK Offers for Medical Specialty Training website.

We are confident of achieving the benefits of the single online system, which was developed by NHS Education for Scotland (NES) and has already proven to be successful in Scotland. The Medical Programme Board has agreed that work will continue to test the single online system for use in 2012 recruitment.

If you have any questions regarding this, please do not hesitate to contact the Specialty Recruitment Team

### **KSS RECRUITMENT DATES FOR ROUND 1**

Please see below a list of when each of the specialties are interviewing at KSS:  
Specialty Application Open Application Close Interview Date

ACCS	3 December 2010	20 December 2010	7 – 9 February 2011
Anaesthetics	3 December 2010	20 December 2010	24 – 25 January 2011
CMT	2 December 2010	21 December 2010	1 – 3 February 2011
Obs & Gynae	3 December 2010	20 December 2010	7 – 9 February 2011
Paediatrics	3 December 2010	20 December 2010	14 – 16 February 2011
Psychiatry	3 December 2010	20 December 2010	1 – 2 March 2011
Radiology	6 December 2010	20 December 2010	1, 3 February 2011
Surgery	3 December 2010	20 December 2010	11 – 14 January 2011

### **KSS RECRUITMENT DATES FOR ROUND 2 (ST3/4)**

Specialty Application Open Application Close Interview Date

Acute Medicine	TBC	TBC	16 – 17 May 2011
Anaesthetics (CT2/ST3)	18 February 2011	4 March 2011	4 – 5 April 2011
Clinical Oncology	4 March 2011	31 March 2011	10 – 11 May 2011
Dermatology	TBC	TBC	12 May 2011
Endo & Diabetes	TBC	TBC	20 May 2011
Gastroenterology	TBC	TBC	19 May 2011
Geriatrics	TBC	TBC	9 - 10 May 2011
Medical Oncology	4 March 2011	31 March 2011	17 – 18 May 2011
MMV/ID	TBC	TBC	19 May 2011
Neurology	TBC	TBC	13 May 2011
Psychiatry	TBC	TBC	3 - 5 May 2011
Renal	TBC	TBC	12 May 2011
Respiratory	TBC	TBC	20 May 2011
Rheumatology	TBC	TBC	13 May 2011

### **DEANERY CAREERS UPDATE**

Interestingly, the importance of careers information and guidance was highlighted in October 2010 by the *Foundation for Excellence: An Evaluation of the Foundation Programme, Professor John Collins report*. The report stated that 'the quality of careers advice may be lacking' for trainee doctors, saying that 'those in established medical practice often tend to support their own area or, through the 'hidden curriculum' deter trainees from pursuing certain careers in medicine, such as general practice'. If you feel you need some extra help giving careers advice and guidance to trainees, the STFS careers team provides a 'careers support workshop' which outlines a career planning framework. See over the page for further information on how to sign up to it.

The Collins report also concluded that there should be 'greater transparency in the data made available on careers'. We are very much aware of how crucial this information is and are working to highlight workforce statistics in a video-cast which will be due out later this

[www.cmec.info](http://www.cmec.info)

year and will be shown on the NHS medical careers website: [www.medicalcareers.nhs.uk](http://www.medicalcareers.nhs.uk) which our team manage on behalf of the Department of Health. The NHS medical careers website has recently undergone an external evaluation, which was very positive, confirming that it is valued by its target audiences (we attach a PDF of the evaluation). It is really worth signposting the website to your trainees as there is a lot of really useful information on over sixty different medical specialties, in addition to interactive tools which will aid your trainees to reflect on their values, interests and skills.

At a local level the careers team has increased their offer of careers support to foundation trainees in NHS Trusts by providing group workshops and one-to-one drop-in sessions. These sessions are intended to compliment the careers discussions that the FTPDs, Careers Leads and Educational Supervisors will already be having with their trainees.

Referrals to the STFS careers team

We would like to remind you that the STFS careers team are able to take one-to-one referrals within the framework of the trainee support model below which works on a three-tier basis:

**First tier:**

Within the South Thames Foundation School educational supervisors in each of the NHS Trusts are the first point of contact for foundation trainees.

**Second tier:**

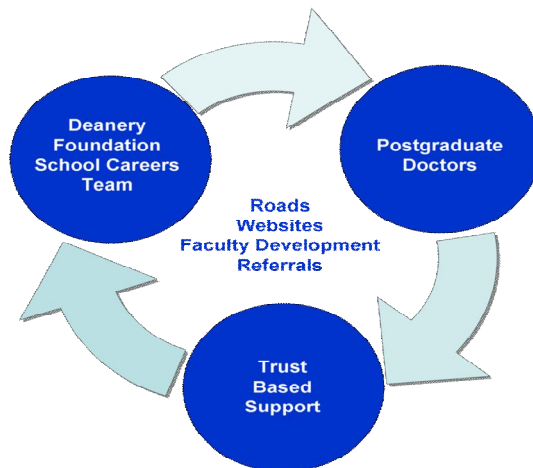
Foundation trainees may be referred to foundation programme leads and/or trust careers leads and DMEs at trust level who have received additional training in careers support.

**Third tier:**

Trainees who are experiencing difficulty in planning their careers may be referred to the KSS Deanery Careers team.

The referral process is via educational supervisor/medical education manager/training programme director. The resulting careers interview is completely impartial and confidential. Once referred, the trainee would be invited to come for an initial appointment at the KSS Bermondsey Street office which would last up to an hour. The trainees can be supported through up to five follow-up sessions.

See the careers support model below which shows how postgraduate doctors are supported in STFS:



[www.cmec.info](http://www.cmec.info)

### One-to-one drop-in careers support sessions

As well as taking referrals through the trainee support model (above), since the successful running of a pilot last year, we are now running 30 minute one-to-one drop-in sessions at several NHS Trusts across the region. These sessions have received positive feedback where they have been running and have been well-attended by F1 and F2s.

As we do not have the resource to visit every Hospital Trust we are running these sessions on a rolling basis. This means that we are able to offer up to three visits (one per month seeing 5 trainees per visit) per hospital and we are offering these to NHS Trusts on a first-come-first-served basis. At present we have availability to visit two more NHS Trusts from April - June 2011. We will also be running these sessions from Sept - Nov 2011. Please get in contact if you would like us to offer these sessions to your trainees. (contact: [careers@stfs.org.uk](mailto:careers@stfs.org.uk)).

### F1/F2 careers support workshops

In 2010 we were able to visit more NHS Trusts to deliver workshops to F1 and F2 trainees. In 2011 we will continue to offer these workshops to NHS Trusts within the region. As we are not able to visit every NHS Trust we are planning to send out information packs and request to ensure that all trainees have access to the material for such careers support workshops.

### ROADS to Success has been updated

### SW Peninsula Selection to Specialty DVD

The South West Peninsular Deanery/AGCAS DVD '*Selection Centres for Specialty Training*' (2008) will help trainees to understand the processes you may go through in selection programmes. Assessments may vary depending on the type of specialty/post you apply for and the deanery to which you are applying.

The DVD has examples of five types of assessment you may face:

[Portfolio interview](#)

[Presentation](#)

[Mock GP consultation](#)

[Structured interview](#)

[Simulation station](#)

The careers team have now paid for the licence for this DVD so that all foundation trainees within STFS will soon be able to view it from a password-protected account which they will be able to access via the STFS website: [www.stfs.org.uk](http://www.stfs.org.uk)

### Careers Support Workshops offered to Educational Supervisors within the region

The *Foundation for Excellence Collins report* (Oct 2010) emphasized the importance of the quality of careers guidance. This year the STFS Careers team are continuing to provide a one day workshop which is open to all Educational Supervisors/MEMs in the KSS region and also in South London NHS Trusts. The workshops are held at KSS Deanery, 7 Bermondsey Street and can be booked through the following link: [kssdeanery.org/course/careers-support-training](http://kssdeanery.org/course/careers-support-training)

[www.cmec.info](http://www.cmec.info)

## PG Certificate Managing Medical Careers - now extended to a PG Diploma/MA

KSS Deanery runs, through its partnership with the University of Brighton a PG Certificate / PG Diploma / MA in Managing Medical Careers. These courses are designed to offer participants an opportunity to become more proficient in the provision of career support to medical students and junior doctors. These courses are unique, and the PG Cert has been running since January 2008.

The PG Cert is currently recruiting students for a September 2011 start, and the link below gives more information with regard to the application procedure.

For further information, see the KSS Deanery website:

[kssdeanery.org/course/pg-certificate-managing-medical-careers](http://kssdeanery.org/course/pg-certificate-managing-medical-careers)

If you would like our support at any event, please contact us at: [careers@stfs.org.uk](mailto:careers@stfs.org.uk)

### **KSS Workforce Team**

<b>KSS Office Location</b>	<b>Address</b>		<b>Telephone /Fax</b>
Bermondsey Street	KSS Deanery 7 Bermondsey Street London SE1 2DD		<b>020 7415 3400</b> (Main Reception) Fax 020 7415 3686 (Workforce Fax)
Alpha House	KSS Deanery, Suite 53, Alpha House 100 Borough High Street, London Bridge SE1 1LB		<b>0207 863 3000</b> (Main Reception)
<b>Job Title</b>	<b>Name</b>	<b>Location</b>	<b>Bermondsey Street</b>
Head of Specialty Workforce	Angela Fletcher	Alpha House	020 7415 <b>3431</b>
Specialty Schools Manager	Vicky Elkin	Alpha House	020 7415 <b>3601</b>
Medical Workforce Manager (Interim)	Vicky Ridley-Pearson	Alpha House	020 7415 <b>3432</b>
<b>Specialty</b>	<b>Name</b>	<b>Location</b>	<b>Bermondsey Street</b>
PA to Angela Fletcher (Interim)	Jane Francis	Alpha House	020 7415 <b>3477</b>
Team - MWA (Interim)	Jonathan Dunne	Alpha House	020 7415 <b>3485</b>
Training & Event Co-ordinator (Acting)	Carmiel Shay	Alpha House	020 7415 <b>3502</b>
National Recruitment Co-ordinator (Interim)	Sherisse Isaacs	Alpha House	020 7415 <b>3497</b>
National Recruitment Co-ordinator (Interim)	Kamran Khan	Alpha House	020 7089 <b>7501</b>
National Recruitment Administrator (Interim)	Merryn Saunders	Alpha House	020 7089 <b>7502</b>
Data & Workforce Approvals Officer	Lee Surry	Alpha House	020 7415 <b>3456</b>
Recruitment Enquiry Co-ordinator (Interim)	Miah Hussain	Alpha House	
ACCS & Obs & Gynae (core) & EM - MWO	Ruth Seager	Alpha House	020 7415 <b>3500</b>
ACCS & Obs & Gynae (core) & EM - MWA (Interim)	Vacant	Alpha House	020 7415 <b>3476</b>
ACCS (& Sub Specialties) , Anaesthetics (& ICM) & O&G - MWPA	Lisa Freedman	Alpha House	020 7415 <b>3670</b>
Anaesthetics & ICM - MWO	Denise Chukwu	Alpha House	020 7415 <b>3406</b>
Anaesthetics & ICM - MWA (Interim)	Lucy Covington	Alpha House	020 7415 <b>3433</b>
CMT (Core) - MWO	Jemma Thompson	Alpha House	020 7415 <b>3472</b>

[www.cmec.info](http://www.cmec.info)

CMT (Dermatology, Geriatrics, Renal) - MWA	Jeremy Brutus	Alpha House	020 7415 <b>3428</b>
CMT (& Sub Specialties) and Psychiatry (& Radiology) - MWPA	Aaron Haile	Alpha House	0207 415 <b>3443</b>
Higher (Dermatology, Geriatrics, Renal, ect) - MWO (Acting)	Amica Maxwell	Alpha House	020 7415 <b>3479</b>
Psychiatry (Core & Higher) & Radiology - MWO	Kevin Hand	Alpha House	020 7415 <b>3501</b>
Psychiatry (Core & Higher) & Radiology - MWA (Interim)	Evin Donohoe	Alpha House	020 7415 <b>3503</b>
Paediatrics - MWO	Deborah Bunce	Alpha House	020 7415 <b>3409</b>
Paediatrics - MWA	Jackie Hummel	Alpha House	020 7415 <b>3505</b>
Paediatrics and Surgery - MWPA	Sithara Gunasinghe	Alpha House	020 7415 <b>3638</b>
Surgery - MWO	Siobhan Gallagher	Alpha House	020 7415 <b>3429</b>
Surgery - MWA	Daniel Margerison	Alpha House	020 7415 <b>3504</b>

**Surgery** - [coresurgery@kssdeanery.ac.uk](mailto:coresurgery@kssdeanery.ac.uk)  
**ACCS** - [accs@kssdeanery.ac.uk](mailto:accs@kssdeanery.ac.uk)  
**CMT** - [cmt@kssdeanery.ac.uk](mailto:cmt@kssdeanery.ac.uk)  
**Paediatrics** - [paediatrics@kssdeanery.ac.uk](mailto:paediatrics@kssdeanery.ac.uk)  
**Emergency Medicine** - [EmergencyMedicine@kssdeanery.ac.uk](mailto:EmergencyMedicine@kssdeanery.ac.uk)  
**Stroke** - [stroke@kssdeanery.ac.uk](mailto:stroke@kssdeanery.ac.uk)  
**Anaesthetics** - [anaesthetics@kssdeanery.ac.uk](mailto:anaesthetics@kssdeanery.ac.uk)  
**Obstetrics & Gynaecology** - [o&q@kssdeanery.ac.uk](mailto:o&q@kssdeanery.ac.uk)  
**Renal Medicine** - [Renalmedicine@kssdeanery.ac.uk](mailto:Renalmedicine@kssdeanery.ac.uk)  
**Psychiatry** - [psychiatry@kssdeanery.ac.uk](mailto:psychiatry@kssdeanery.ac.uk)  
**ICM** - [icm@kssdeanery.ac.uk](mailto:icm@kssdeanery.ac.uk)  
**GeriatricMedicine** - [GeriatricMedicine@kssdeanery.ac.uk](mailto:GeriatricMedicine@kssdeanery.ac.uk)  
**Dermatology** - [Dermatology@kssdeanery.ac.uk](mailto:Dermatology@kssdeanery.ac.uk)  
**Training** - [specialtytraining@kssdeanery.ac.uk](mailto:specialtytraining@kssdeanery.ac.uk)  
**Recruitment** - [specialtyrecruitment@kssdeanery.ac.uk](mailto:specialtyrecruitment@kssdeanery.ac.uk)

## USEFUL WEBSITES

- General information about specialty training (e.g. reference to 'The Gold Guide' and the MMC website – <http://www.mmc.nhs.uk>).
- [www.microsoft.com/uk/nhs](http://www.microsoft.com/uk/nhs) which has links to the e-learning available for Outlook, Excel, Powerpoint etc and also details of discounted software (eg Microsoft Office for Home use - £18)
- <http://www.corelearningunit.nhs.uk> - Equality and Diversity training on line (free)
- [www.cmec.info](http://www.cmec.info) The CMEC website
- Please note updated Study Leave Guidelines for Doctors and Dentists in Training (July 2009) are now available on the KSS Deanery Website located under <http://www.kssdeanery.org/documentwarehouse>
- **The West London Medical Journal**  
<http://www.ingentaconnect.com/content/ubpl/wlmj>

Epocrates Rx for iPhone OS includes:

- **Medication information** — Review continually updated prescribing and safety information on over 3,300 branded and generic prescription drugs, plus hundreds of over-the-counter products
- **InteractionChecker** — tap the "Interactions" tab and enter up to 30 drugs to check for interactions
- **Pill ID** — Identify a mystery drug by tapping the "Pill ID" tab and entering its physical characteristics such as color and size.
- **MedMath** — dozens of useful medical calculators, including BMI, pregnancy wheel and unit conversion
- **Search by Class** — Search for a drug by its name or tap "Browse Drugs, Diseases, Labs..." and choose "Drug by Class" to find a drug by its classification.
- **DocAlert® messages** — timely clinical news appears each time you sync
- **Mobile Resource Centers** — Save time with handheld access to the latest and most significant clinical news and research in medical conditions or specialties. Access them in your "More" tab now!
- **Formularies** — click on "My Account" at [www.epocrates.com](http://www.epocrates.com) and select "Edit Formularies" to add free health plan, hospital, and Medicare Part D insurance formularies
- **Tables/Calcs** — Additional association guidelines, references and medical calculators to help you every day
- **Landscape mode viewing**

[www.cmec.info](http://www.cmec.info)

[www.cmec.info](http://www.cmec.info)

Edited by: BEBBA SMITHERS ext. 2726 [bebba.smithers@rws-tr.nhs.uk](mailto:bebba.smithers@rws-tr.nhs.uk)  
*Postgraduate Education Manager/GP Education Manager*